

Newdeal Institut de Français

French courses for foreigners

LEARN FRENCH IN BORDEAUX !

STANDARD AND INTENSIVE COURSES ●
INDIVIDUAL COURSES ● DELF-DALF EXAM PREPARATION
UNIVERSITY PREPARATION COURSES

newdealinstitut.com



QUALITÉ

FRANÇAIS LANGUE ÉTRANGÈRE



THE CITY OF BORDEAUX

"The most gourmet city in the world" (Thrillist)

"Best European destination 2015" (European Best Destinations)

"The most attractive city in the world 2017" (Lonely Planet)



Bordeaux is the sixth largest city in France, boasting a population of almost 800,000 people.

Its world- renowned university accommodates almost 70,000 students and about 7,500 international students, making it a very dynamic city, bustling with life and energy.

Ideally located on the southwest coast of France, Bordeaux is only 3 hours away from Paris by train, less than 1 hour away from the beaches and about 2 hours away from Spain. With its rich history and over 300 historical landmarks, the city is second only to Paris in terms of cultural heritage with some buildings dating back to Roman times. Since 2008, Bordeaux has also featured on the UNESCO World Heritage List as "an outstanding urban and architectural ensemble".

The city's beautiful parks, sports facilities, museums, theatres and clubs provide countless opportunities to enjoy your time in Bordeaux and experience life "à la française".





Newdeal

Institut de Français

Cours de français pour étrangers

A WIDE RANGE OF FRENCH COURSES

French courses all year round, from 1 to 48-week periods, and for all levels : general French, French au pair, DELF/ DALF exam preparation, conversation workshop, groups...



A FRIENDLY ENVIRONMENT

Our team will always be available to assist you upon your arrival and during your stay in Bordeaux. - Our school offers an ideal welcome. Notre école vous propose des conditions d'accueil idéales. Au cœur de Bordeaux, directement accessible en transport en commun, nous disposons de neuf salles de cours climatisées, de salons de détente, d'un centre de ressources, d'un jardin intérieur. Bienvenue chez vous ! Our school offers you ideal conditions of welcome. In the heart of Bordeaux, directly accessible by public

QUALITY FRENCH COURSES GUARANTEED

Newdeal Institut organises French courses with friendly atmosphere. Year-Round registration for individuals and groups. We work in small groups of 12 to 15 students maximum. All our staff are certified FFL teachers (French as a Foreign Language) who have worked in different countries and are therefore experienced in teaching students with different cultural backgrounds. The school is certified by the French as a foreign language quality label (label qualité FLE), which provides acknowledgement from the French public authorities of the language training and services offered by the school.

IN THE HEART OF FRENCH LIFESTYLE

Our various accommodation options encourage exchanges and total immersion, so our students get a real taste of the French way of life!

IN A FUN ENVIRONMENT

Bordeaux and its surroundings have a lot to offer ! Concerts, exhibitions, sports activities, a quick visit to the beach or the vineyards... There a reason why Bordeaux has been elected World's most attractive city 2017 !

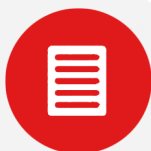


FRENCH IN NEWDEAL



MATERIALS

All our students receive a welcome booklet containing tips about the city, a presentation of the school and a student card. Our teachers use modern language teaching B1 materials and methods, as well as audio, video and press materials etc.



CERTIFICATE

At the end of their course, students receive a certificate showing the programme followed and the language learned.



LEVELS

Classes are divided into four groups: from beginners to advanced, according to the CEFRL scale.



TEST

Students fill in an initial level test online before having a personal oral evaluation to define their level and choose the right class for them.



RESOURCE CENTRE

Students have access to our resource centre, open every afternoon. There are books and various materials that the students can check out and borrow. They can also use our digital resources and gather information about different subjects (employment, jobs, outings etc.).

THE LEVELS

A1 BEGINNER LEVEL

This person is able to understand simple statements, introduce themselves or introduce a third person in a simple manner. They can also ask basic questions and communicate in a simple way with patient and cooperative listeners.

A2 ELEMENTARY LEVEL

This person is capable of understanding isolated sentences about simple and familiar subjects. They can also introduce themselves, exchange simple, personal information and communicate with patient and cooperative listeners.

B1 INTERMEDIATE LEVEL

This person is capable of understanding the essential points of a conversation, providing the language used is basic and clear and that the subject of the conversation contains familiar subjects (work, school, university, studies, leisure, holidays, tourism etc.) This person can also make simple and coherent conversation about familiar subjects.

B2 UPPER INTERMEDIATE LEVEL

This person can correctly understand the essential contents of concrete or abstract subjects, including technical exchanges. They are also able to communicate in the target language with a good degree of spontaneity and ease and can express their opinions on current affairs.

C1 ADVANCED LEVEL

This person is capable of understanding long and challenging texts, grasping implicit significations and subtle nuances. They can also express themselves fluently and talk about complex subjects whilst mastering common articulation tools of speech.

C2 EXPERT LEVEL

This person is able to effortlessly understand, reproduce, paraphrase, explain and reconstruct facts and arguments from various sources (written and oral). They can also express themselves spontaneously, in a precise and fluent way, about complex subjects.



OUR ACCREDITATIONS



LABEL QUALITÉ FLE

Newdeal obtained, following the audit of the CIEP (International Center for Pedagogical Studies), the French as Foreign Language quality label for the conformity and the quality of its reception, services, courses, premises and management. The FLE quality label is the result of a quality approach of 3 French ministries: the Ministry of Higher Education and Research, the Ministry of Culture and Communication, the Ministry of Foreign and European Affairs. They are members of the interministerial certification committee which awards the FLE quality label.



CAMPUS FRANCE

Campus France is the French agency for the promotion of higher education, reception and international mobility. Newdeal is one of the institutions with access to the Campus France computer system designated as a "connected institution". This simplifies the steps when applying for a study visa.



ISQ - OPQF

The OPQF qualification is a mechanism for recognizing the professionalism of continuing education organizations, set up at the initiative of the DGEFP, the Ministry of Labor and Employment, and the Federation of Vocational Training. The criteria for recognition of professionalism are in line with those prevailing in the selection and selection of training providers by companies:

- Skills and experience of trainers ;
- References and control of customer satisfaction ;
- Assessment of the financial health of the organisation thus validating a presumption of financial sustainability of the legal persons over 3 years ;
- Adequacy of resources for the services delivered ;
- Provider's commitment to comply with the OPQF Code of Business Conduct.

"À LA CARTE" MODULES

Standard 20 lessons

20 lessons - 15 hours a week

Classes from 9.15am to 12.30pm

Beginning of classes every Monday

All levels

Placement test upon arrival

12 students per class maximum
Classes from Monday to Friday from
9.15am to 12.30pm
Enrollment all year round



The general French course is based on a large range of activities such as roleplays, simulations, creative workshops and group work. Innovative tools and learning strategies are implemented in order to enhance skills outside the classroom.



"À LA CARTE" MODULES

Intensive 30 lessons

30 lessons = 22.5 hours per week

Classes from 9.15am to 12.30pm

Beginning of classes every Monday

All levels

Placement test upon arrival



This course is a combination of the standard course and a reinforcement course which helps accelerate progress. Additional classes focus on oral expression.

12 students per class maximum

Classes from Monday to Friday from

9.15am to 12.30pm and from 1.30pm to 3pm

Enrollement all year round

"À LA CARTE" MODULES

Blended lessons

Chose your own program and make the most of your private teacher. The ideal way to concentrate on your specific difficulties and address your personal needs.

Combined 20 + 5

20 standard lessons = 15h
5 individual lessons = 3H45

Combined 20 + 10

20 standard lessons = 15h
10 individual lessons = 7H30

Combine the dynamic group classes with individual lessons to maximize your learning experience. At your rythm, you can go into depth of subjects covered in group classes with your private teacher.



"À LA CARTE" MODULES

Exam programme

22h30 lessons - 17h per week

Classes from 9.30 am
to 12.30 pm + 1 workshop

Beginning of classes every Monday

All levels

Placement test upon arrival



This course, consisting of a combination between the standard course and the exam preparation course, is ideal for those wishing to prepare themselves for the DELF / DALF © exam at the end of their lessons.

12 students per class maximum

Classes from 9.30am to 12.30pm

One workshop per week from 6.30pm to 8.30pm

Enrollement all year round

"À LA CARTE" MODULES

Flexible lessons



DEL F / DAL F© preparation

4 lessons per week

The DEL F / DAL F Exam Preparation Course is an ideal program of intensive training for standard exams and personalised coaching in order to obtain the highest score.

12 students per class maximum.



Evening lessons

2 lessons per week

The evening class is for students who are not available during the day. These workshops allow you to work on all aspects of French. The groups are organised by level.

12 students per class maximum. One workshop per week from 6.30pm to 8.30pm.



Flexible Course 1

9h per week

Flexible Course 2

12h per week

For busy schedules, we suggest choosing only 3 or 4 days of classe per week. Join the standard courses to enjoy tailor-made learning based on your availability.

Classes from 9h30 to 12h45 / 3 or 4 days a week.



OUR LONGSTAY MODULES

Au pair



French courses

French classes in small groups according to levels.
12 students per class maximum.



Immersion

Learning and improving language skills in everyday situations.



Adaptability

A specially adapted module for au pair's and their busy schedules.
10 hours of classes per week
(8h in class / 2 hours of autonomous work).



Mondays and Thursdays from 10am to 12h30pm / 13.30pm - 15pm

or

Tuesdays and Fridays from 10am to 12.30pm / 13.30pm - 15pm

LONG TERM MODULES

Long terme



French courses

French classes in small groups according to levels.
15 students per class maximum.



Acquisition

General French lessons: B2+ objective.
University preparation and integration : acquisition
of French learning techniques.



Immersion

Bordeaux university campus visits Open days etc.



Exam

DELFI / DALF or TCF exam at the end of training
included in inscriptions of 3 trimesters or more.



Fixed entry dates for each trimester
Mondays, Tuesdays, Wednesdays, Thursdays, Fridays
9.15am to 12h30pm / 13.30pm - 15pm



ACCOMMODATION

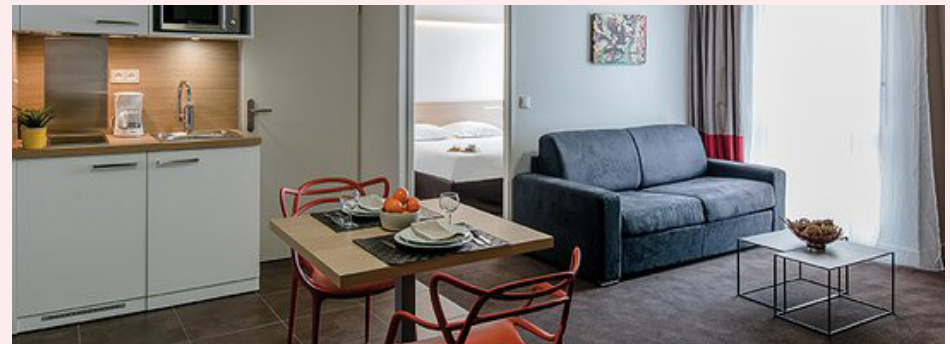


HOST FAMILIES

Accommodation with a host family is the best way to rapidly improve your level of the language. For many years, we have been working with families that we have carefully selected for their close proximity to the school, their comfort and also their interest and cultural awareness.

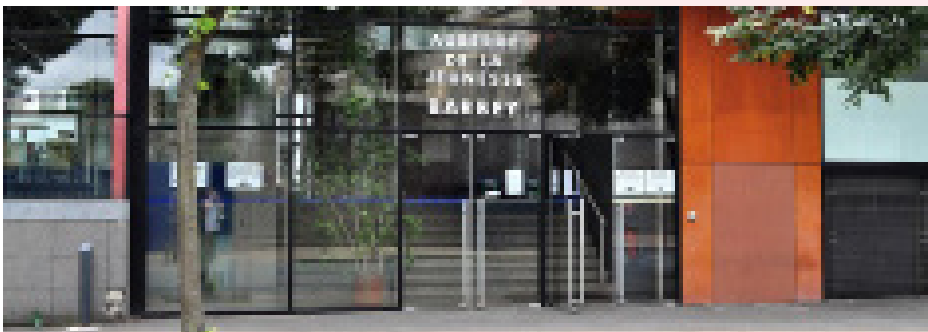
APPART'HOTEL

The appart-hotels we collaborate with are situated in the heart of Bordeaux and are a 15 minute walk from the school. We offer exclusive, special rates with our appart-hotel partners.



HOTELS / YOUTH HOSTEL

The hotels and youth hostels we collaborate with are situated in the heart of Bordeaux. They offer the ideal solution for short-term stays. We offer exclusive, special rates with our hotel and youth hostel partners.



CULTURAL ACTIVITIES

Our rich program of activities and excursions allow our students to discover French culture and the various events of the city. It also gives them a chance to practice the language in a different way and to meet other people. An activity program is given to all new students upon their arrival. The program is updated each month.

Here are a few examples of the activities on offer:

Bowling

Theater

Cinema

Wine and cheese tasting

Ice skating

City tour

Museums

Cooking workshop

Excursions (Arcachon, St Emilion...)



TRANSPORT

COME TO BORDEAUX BY PLANE

The Bordeaux-Mérignac airport is the main airport of the Aquitaine Limousin Poitou-Charentes region. Situated to the west of Bordeaux (about 10km from the city centre), it is easily accessible by public transport. NEWDEAL INSTITUT also offers a transportation service to and from the airport. The vast panel of national and international destinations allow more than 5 million visitors a year.

COME TO NEWDEAL BY TRAIN

Bordeaux Saint Jean train station is connected to all the main cities of France, as well as international ones by railway. Thanks to a speedy new train line, Paris is now only 2 hours from Bordeaux!

COME TO NEWDEAL BY TRAM

Our school is in front of the "Jardin Botanique" stop on the tram's A line.

COME TO NEWDEAL BY BUS

Many bus lines serve the neighbourhood, the closest stop to the school is "Jardin Botanique".



WHAT THEY THINK OF US

"Best language school ever !"

Jennifer - ALLEMAGNE

"A fantastic, wonderful language school! Both educational and welcoming. I really appreciated taking classes here and I highly recommend it. The school is very convenient (in the city center), close to the tramway and easily accessible by bike."

Ellen - DANEMARK

"Newdeal is a really good school. From the beginning I felt welcomed and I am really happy over choosing this school. The teachers and the lessons are great and I really feel that I have developed my French. If you want to learn French in Bordeaux, this is the place to be!"

Amanda - SUEDE



"I had the chance to take a general French course at Newdeal Institut for a few weeks. I have been really satisfied with the teachers, the lessons and the activities. I am even more motivated than before to continue learning."

Marta - ITALIE

"Perfect experience! I am very happy to have studied the French language at Newdeal. I will definitely come back!"

Ander - ESPAGNE



TERMS AND CONDITIONS

The terms and conditions here present are applicable to services offered by Newdeal Institut to individuals regulating their lessons and related services directly, as well as au pair students having assigned their host to act in their name. By registering, the applicant wholeheartedly accepts the here present terms and conditions. Newdeal Institut refers to these terms and conditions in full force and effect on the day of registration.

1. Admission conditions

To be admitted into the school, applicants must be 18 years of age, or have parental guidance if they are a minor. For groups of minors, an accompanier must be responsible for said group. Newdeal Institut cannot be held responsible for difficulties obtaining a visa through French authorities.

2. Payment conditions

Newdeal Institut favours payments made by bank transfer. If a payment made by bank transfer causes additional bank charges, Newdeal Institut has the right to demand a refund from the student.

3. Registration fee

Newdeal Institut demands 70€ administrative fees when registering. The administrative fees are viable for 12 months starting from the first month of lessons. These fees must be paid for pre-registration, at the time of registration or at the beginning of the first lesson and are non-refundable.

4. Accommodation

Newdeal Institut helps the student (on demand) to find accommodation in Bordeaux or its suburbs, depending on the availabilities of said accommodation. Therefore, it is possible that Newdeal Institut cannot provide accommodation for the student or accommodation that corresponds to their demands, notably when the demand is made less than one month in advance.

5. Modifications

Newdeal Institut reserves the right to cancel a lesson for which the headcount is insufficient and to modify, if necessary, the indicated prices and dates of the sessions.

6. Insurance

6.1 Health, accident and liability insurance are at the student's expense. Therefore, the student must make sure that they are properly insured for all medical or travel cancelation expenses with a reputedly solvent insurance company. A copy of said insurance can be requested by Newdeal Institut at any time.

6.2 Student's object, luggage, furnishing, vehicle and valuable belongings are not insured against theft, loss, or damage, whatever the cause. Students are therefore responsible for taking out any insurance they see fit to insure their personal belongings.

6.3 For students lodging in university complexes or with a host family, they are required to subscribe to liability insurance. A copy of this insurance will be requested on arrival.

7. Modifications / Postponing / Refunds

7.1 In the case of an impediment, in particular the delayed acquisition of a visa, the lessons planned at the time of registration can be postponed to a later time only once.

7.2 All lesson sessions that have started should be fully paid for. No refund for future lessons or pre-registration is planned except in the cases expressly provided below in sections 7.3 and 7.4.

7.3 Visa refusal

Should the student's visa be refused, providing it is duly certified by the French consulate, the lessons or pre-registration can be refunded, after deduction of the standard amount of 50€ corresponding to the bank transfer charges. The registration fees (section 3) are non-refundable.

7.4 Partial reimbursement in the case of an illness or death of a family member Should a serious illness (certified by a registered doctor), the death of an ancestor, offspring or partner necessitate the student to discontinue lessons or definitively return to their country of origin, Newdeal Institut refunds:

- The hours of lessons, after the standard deduction of 20 hours' worth of lessons.
- The registration fees (section 3) are non-refundable.

7.5 In all cases stated above in sections 7.3 and 7.4, reimbursement is contingent upon presentation of documentary evidence.

8. Attendance

The student is obliged to attend lessons with regularity, from the beginning of each session. An attendance certificate will be issued on demand.

9. Discipline

Should the student display misbehaviour or abnormal behaviour, Newdeal Institut reserves the right to interrupt the course without notice and without reimbursement. This rule also applies if they fail to comply with the school regulations.

10. Use of photos and images

Newdeal Institut may be required to take photos of students in order to use them to illustrate a brochure, an advertisement or its website unless otherwise noted by the student. This information must be notified in writing at the time of inscription at the latest.

11. Rights of access to computerised files

The information asked about the students at the time of inscription is not transferred to anyone except all natural or legal persons who are expressly entitled to know them. All students are entitled to ask the school for the communication of the information about themselves and have it corrected if necessary, according to the provisions of the identity protection law (N°78-17 of the 6th January 1978).

12. Complaints and withdrawals

Registrations carried out by correspondence or online result in the right to withdraw the action for a period of 14 days from the day of registration. All complaints and withdrawals must be in writing and sent to Newdeal Institut, 74 avenue Thiers, 33100 Bordeaux. All litigation falls under the exclusive jurisdiction of Bordeaux and French law.







Newdeal Institut

Newdeal Institut
74 Avenue Thiers - 33100 Bordeaux
+33(0)9 53 03 16 20
contact@newdealinstitut.com
newdealinstitut.com