



**KEEP  
LEARNING  
FRENCH**

# LANGUAGE & CULTURAL IMMERSION IN FRANCE

**FRENCH COURSES FOR ADULTS & STUDENTS**



**FRENCH LANGUAGE SCHOOLS IN  
Montpellier - Lyon - Toulouse - Annecy - Bordeaux**



A scenic view of a French village street, likely in the Loire Valley, featuring traditional stone buildings and a prominent castle on a hill in the background. The image is overlaid with a semi-transparent green filter. The text is centered and reads:

**LEARN FRENCH,  
DISCOVER  
FRANCE  
AND ITS  
CULTURE**

# CONTENTS

<i>Editorial</i>	4
<i>Locations</i>	5
<i>KLF'S Commitments</i>	6
<i>Key Points</i>	7
<i>Our accreditations</i>	8
<i>Education and Pedagogy</i>	9
<i>KLF French exam centres</i>	10

## **FRENCH COURSES IN IMMERSION**

<i>Our French courses</i>	12
<i>Our 4 general French courses</i>	13
<i>Our Certification programs</i>	14
<i>Our Diploma programs</i>	15
<i>Our additional options</i>	16
<i>Group stays</i>	17

## **ACTIVITIES / ACCOMMODATION**

<i>Cultural activities</i>	19
<i>Accommodation</i>	20-21

## **OUR DESTINATIONS**

<i>Montpellier</i>	24-25
<i>Lyon</i>	26-27
<i>Bordeaux</i>	28-29
<i>Toulouse</i>	30-31
<i>Annecy</i>	32-33

<b>CONTACT INFORMATION</b>	34
----------------------------	----

# WHO ARE WE?



*“KLF - Keep Learning French, our commitment is to make sure you have a unique linguistic and cultural experience.”*

Our KLF schools have been teaching for an average of 20 years and welcome more than a combined 6,500 students every year.

Located in the city centre, each school benefits from remaining on a human scale and offering a very warm atmosphere. This is recognised in their formidable reviews by their students.

Each of our teams gives it 110% and are passionate about ensuring our students have an unforgettable experience whilst they acquire the French language.

Have faith in the expertise of the KLF group:

- Official recognitions both in France and internationally
- Structured and innovative programs
- High student satisfaction rates

The merger of our schools within a single group enables us to design a unique and innovative offer based on the best practices of each school.

Our teams have all contributed their know-how and expertise to produce the best educational and cultural experience you could have.

Our organisation enables us to care for each of our students with our schools remaining on a human scale, whilst benefiting from the support of a structured group.



***Welcome to France, and welcome to our schools.***



**Managing Director:**  
*Anne-Laure Fernandez*



**Chief Marketing Officer:**  
*Marc Lavigne Delville*



**Education Director:**  
*Frédérique di Tullio*

# OUR DESTINATIONS

*“ Learn French in the most beautiful cities in France ”*

Schools within the KLF network are located in 5 magnificent cities in the southern half of France: Montpellier, Lyon, Bordeaux, Toulouse, and Annecy. These locations enable us to offer international students a variety of atmospheres and culture, each rich in respect to their history and their geographical positioning. In addition to learning French, you will familiarise yourself with France.



## MONTPELLIER

**LSF-IEF MONTPELLIER**

« Montpellier, right next to the Mediterranean »



## LYON

**LYON BLEU INTERNATIONAL**

« Lyon, the world capital of gastronomy »



## BURDEOS

**NEWDEAL INSTITUT DE FRANÇAIS**

« Bordeaux, the world capital of wine »



## TOULOUSE

**langue onze**  
toulouse  
école de langues

**LANGUE ONZE TOULOUSE**

« Toulouse, “La Ville Rose” The Pink City »



## ANNECY

**IFALPES ANNECY**

« Annecy, the little Venice of the Alps »



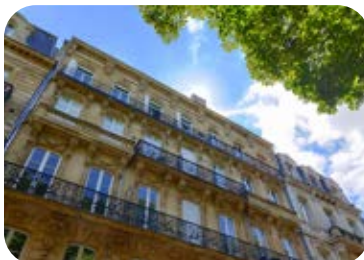
# KLF GROUPES COMMITMENTS

*“Achieve your goals in an excellent environment and enjoy an enriching and unforgettable experience”.*



## FRENCH COURSES FOR EVERYONE

The KLF Group allows you to have a unique cultural experience in France. Our French as a foreign language schools offer programs tailored for all ages and all demographics: adults, students, juniors, schoolchildren, professionals or teachers. Our courses meet every need.



## THE GUARANTEE OF A QUALITY STAY

Each of our schools has the FLE Quality label. We take particular care in welcoming our students, ensuring they have an unforgettable experience. Our courses, accommodation and the activities offered have all been validated by quality audits.



## CONVIVIALITY AND SUPPORT

Joining a school that is part of the KLF group assures you of being taught by a qualified and committed teaching team. Our reception teams are always available and attentive so that you can stay in the best possible conditions.



## MULTIPLE DESTINATIONS: A UNIQUE AND INNOVATIVE OFFER OF COURSES

Our group provides a harmonised curriculum across the schools. This opens the door to a unique opportunity to enjoy a stay in several cities in France whilst benefiting from educational continuity.



## TAILORED FRENCH LESSONS

Staying as a language tourist enables you to improve your language level and discover French culture. Opt for a bespoke short stay. Need to progress quickly in French with a specific goal in mind? Choose our private lessons. For a long-term diploma or certification course, choose from our long stays.

## OUR KEY POINTS

- Courses for **everyone** (starting from 16 years old)
- From **1 week to 1 year**
- A **friendly atmosphere**
- Full **immersion** into **French culture**
- Schools open **all year round**
- Over **20 years** of experience
- **Recognised and certified** schools



- Lessons from **beginner to advanced levels**
- The possibility of combining **multiple destinations**
- **Satisfaction** and recommendation rates of over **95%**
- Over **100 different nationalities** among our students
- **5 destinations and 5 schools**, each on a human scale
- More than **6,500 students** are welcomed **per year**.
- **Additional services:** accommodation, cultural activities...

# OUR DRIVING FACTORS

*"Our schools are recognised for the quality of their teaching and organisation."*

## OUR STRENGTHS

- ✓ Recognised expertise
- ✓ A dynamic and welcoming team
- ✓ High student satisfaction rates.
- ✓ Located in the heart of their respective cities.
- ✓ Qualified and experienced teachers



*"The satisfaction of our students is at the heart of our priorities."*

## OUR ACCREDITATIONS





# OUR TEACHING AND PEDAGOGY

## ● IMMERSION, THE DRIVER OF LEARNING

Learning French whilst fully immersed provides a natural and authentic approach to the French language. Our French learning methods have been designed to take advantage of all the benefits that being immersed brings. Our language programs enable you to live an immersive global experience: learn the language, discover a different culture, meet French speakers and adapt to a new environment. Thanks to officially recognised expertise, KLF group schools support you in your process of ascertaining the French language and ensure rapid progress at a suitable pace.



## ● A RECOGNISED TEACHING METHODOLOGY

Our pedagogy is based on the latest methodological innovations and is an integral part of our communicative approach. Our French courses are organized around three key points:

- Intensive learning
- Approaches favouring the acquisition of communication skills.
- Enriching intercultural exchanges in an immersive international learning framework.

## ● QUALITY LEARNING

Each school in our group has its expertise recognised by certificates issued by French ministries. Some of our schools have also been chosen to become official centres for awarding diplomas and official French language exams.

KLF works in collaboration with multiple universities around the world developing adapted educational and linguistic programs.

These partners trust us and are evidence of our commitment to quality education for our international students.



# PREPARING FOR AND TAKING EXAMS

Several KLF group schools are official examination centres for the DELF, DALF, TCF and TEF exams.

FRANCE  
ÉDUCATION  
INTERNATIONAL | DELF  
DALF

FRANCE  
ÉDUCATION  
INTERNATIONAL | TCF

\* TEF TEST  
D'ÉVALUATION  
DE FRANÇAIS  
\* DFP DIPLÔME  
DE FRANÇAIS  
PROFESSIONNEL



Put yourself in the best position by preparing for your certification test with our online courses: DELF B2 exam preparation or DALF C1.

## EXAM PREPARATION MODULE



Fixed start dates



4 weeks long with 9 lessons per week



Online course



Level B2 or C1



# OUR IMMERSIVE FRENCH COURSES

# OUR FRENCH COURSES

KLF offers French courses tailored to you, your objectives and projects.

- 1 Our bespoke courses:** Take advantage of the flexibility of our bespoke language stays. Standard, intensive or super-intensive, all our programs start every Monday with grouped classes tailored to each level.
- 2 Our certification courses:** An intensive 3-month French course for long-lasting results, a life experience in French linguistics, cultural immersion and a French test to certify your final level.
- 3 Our diploma courses:** An intensive French course over 24 or 36 weeks to reach a level level of B2 or C1 in French. An experience in French life, French linguistics and cultural immersion for 6 months to a year resulting in a DELF / DALF French diploma – which is valid for life.

## BESPOKE COURSES

From 1 week

Starting every Monday

EVALANG certificate is available after 9 weeks

4 programs to choose from

Lessons per week

**20 or 20+6 or 40**

## CERTIFICATION COURSES

12-week programmes

Fixed dates

TCF or TEF exam included

Intensive Program

Lessons per week

**26**

## DIPLOMA COURSES

Programs of either 24 or 36 Weeks

Fixed dates

DELF / DALF diploma included

Intensive Program

Lessons per week

**26**

# OUR 4 GENERAL FRENCH PROGRAMS

Choose a program that corresponds best to your learning profile: **Standard**, to keep free time, **Intensive** to maximise your progress, **Super Intensive** for a rapid increase in skills or mixed, for tailor-made learning.

<b>STANDARD Program</b>	<b>INTENSIVE Program</b>	<b>SUPER INTENSIVE Program</b>	<b>MIXED Program</b>
			
20 French general lessons per week	20 general French lessons per week + 6 French workshops	40 French general lessons per week	20 general French lessons per week + 6 French workshops
			
The ideal program for discovering the French language and culture both in class and in practice! From 1 to 48 weeks	French immersion lessons due to a reinforced curriculum From 1 to 48 weeks	A comprehensive option which maximises your progress. From 1 to 4 weeks Minimum level A2	A tailor-made course For a specific objective
Includes: A placement test - weekly tutoring - Road book - Evalang certificate (from 9 weeks)	Includes: A placement test - weekly tutoring - Road book - Evalang certificate (from 9 weeks)	Includes: A placement test - weekly tutoring - Road book	Includes: A placement test - weekly tutoring - Road book - Evalang certificate (from 9 weeks)

\* 1 lesson = 45 minutes

\* Morning and/or afternoon lessons

\* Maximum of 14 students per class: - 12 on average.

\* Complete beginners: entry is on fixed dates (contact us)

\* French workshops enable you to approach the language from reinforced communicative aspects.

# CERTIFICATION COURSE

«An intensive long-stay programme»

A 3-month intensive French course for lasting progress, an experience of French life in linguistic and cultural immersion and a French test certifying your final level.

## THE KEY POINTS OF THE CERTIFICATION COURSE



Fixed start dates (every 2 months)



12 weeks of intensive courses (20 general French lessons + 6 French workshop lessons)



Morning or afternoon classes depending on your level



From beginner level

## INCLUDED IN THE PROGRAMME



Weekly tutoring



Access to the e-learning platform



School roadbook



TCF - TEF exam at the end of the course

1 lesson = 45 minutes

Number of students per class: 14 (average 10 to 12)



## ENTRY DATES FOR 2024

- 08/01/2024

- 01/07/2024

- 04/03/2024

- 02/09/2024

- 29/04/2024

- 28/10/2024

# DIPLOMA COURSES

*"A gap year in France"*

An intensive French course during either 24 or 36 weeks to reach level B2 or C1 in French. Here, you will experience French life, linguistics and cultural immersion for 6 months to a year attaining a DELF/DALF French diploma which is valid for life.

## THE KEY POINTS OF DIPLOMA COURSE



Fixed start dates



24 or 36 weeks of intensive courses  
(20 lessons of general French + 6  
French workshop lessons per week)



Classes in the morning or afternoon  
according to your level



Starting from a beginner level



The possibility of carrying out your program  
across several schools within the group  
(multi-

## INCLUDED IN THE PROGRAM



Weekly tutoring



Access to the e-learning platform



School roadbook



A DELF/DALF diploma at the end of the  
course

1 lesson = 45 minutes

Maximum of 14 students per class: - 12 on average.

## START DATES FOR 2024 SESSIONS :

**- 08/01/2024**

**- 02/09/2024**



## OTHER OPTIONS

### ● PRIVATE LESSONS

With our private lessons, you have the guarantee of achieving your specific objectives. Whether your goal is to prepare for an exam, work on a specific notion, or train for an event; in our private lessons, you benefit from a tailor-made program. Your programme will be crafted by you and your teacher. This ensures a better fit for your schedule. Private lessons can be organised online.



### ● TEACHING FOR GERMAN WORKERS (BILDUNGSURLAUB)

KLF schools offer specific programs accredited for the Bildungsurlaub, for several German states. Please contact us for more information.



### ● THEMATIC COURSES FOR FRENCH TEACHERS

Evolve your teaching resources, refresh your knowledge of French culture, discuss your educational practices, try new learning methods and so much more... Our themed courses designed for FLE teachers have all these advantages on offer for you.



### ● JUNIOR CAMP

All our schools offer a summer program for teenagers (13-16 years old). This all-inclusive stay with French lessons also includes an activity program and host family accommodation. Available for a minimum of 1 week, contact us to obtain our brochure regarding this program.



# GROUP STAYS

*"Take part in a Language Stay to enjoy France, discover the culture and improve your French."*

## ● PERSONALISED STAYS

Benefit from experiencing our French as a foreign language schools by organising language school trips. Empower your students by enabling them to benefit from cultural discovery as well as rapid linguistic progression. This is achievable due to our French courses associated with cultural, leisure and sporting activities. KLF group schools welcome school groups all year round.

## ● OUR MODIFIED PROGRAM WITH ACTIVITIES






School trips of 6 days and 5 nights include 15 hours of French lessons spread over each morning. The lessons are followed by an outdoor lunch and leisure activities organised in the afternoons. All our offers are flexible and can be modified depending on your needs.

## ● MULTIPLE ACCOMMODATION OPTIONS

Depending on the demographic of those participating, our schools offer accommodation options with host families, student residences, youth hostels, etc.



### INCLUDED WITH GROUP STAYS

-  A placement test
-  Personalised support
-  French classes
-  Cultural, leisure and sporting activities
-  Tailored accommodation

**ACTIVITIES**



**ACCOMMODATION**

# ACTIVITIES

*"We have a variety of activities that combine with the quality of our teaching"*

Each week, KLF schools offer an itinerary of varied activities directly linked to each of their specific regions. The teams from each school organise a plentiful program suited for all tastes and budgets! This includes gastronomy, arts, sports, culture... among many other themes.



## CULTURAL AND ARTISTIC ACTIVITIES

Discover multiple museums, operas, theatres, concert halls, festivals, and exhibitions of all kinds. With even the possibility of spending the evening enjoying the numerous shows that we offer at discounted rates.

Overview of available activities: Street art, museum visits, artistic workshops (painting, sculpting, ceramics), concerts, shows, operas, cinema...



## LEISURE AND SPORTS

Nature, sports and discoveries. Each of our 5 KLF destinations are found in diverse and magnificent regions.

Alpine lake, Atlantic Ocean, Mediterranean Sea, vineyards, mountains and hills, towns and countryside, rivers and canals, surrounded by natural France. Petanque, climbing, hiking, sailing...



## HISTORY, GASTRONOMY AND OENOLOGY

Using any of our schools as a base, you can discover a multitude of remarkable historical sites. From Roman antiquity to Middle Ages right the way through to the Present day. Each region also offers a very rich province, enabling you to access French culinary riches.

Overview of available activities: visits to historic towns, monuments/remarkable sites, wine walks, local product tastings, and gastronomic tours.

# ACCOMMODATION



## HOST FAMILY

Host family accommodation is the ideal option when focusing on the exchange and discovery of French life. Each of our host families has signed a charter of welcome and trust and are rigorously selected as well as visited by our team. To promote complete immersion, we ensure that students with the same mother tongue do not live under the same roof. Every student has access to their own room.



## STUDENT RESIDENCE

Student residence accommodation provides you with independence throughout your stay: live at your own pace in a fully furnished and equipped studio.

The residences that house KLF students are long-standing partners and are visited and checked regularly by our teams.



## PRIVATE APARTMENTS

Our private apartments are ideal if you want to be completely independent and have a higher level of comfort in your living space.



## SHARED ACCOMMODATION

With more space compared to a student residence, shared accommodation also brings community spirit. This option is a private room in an apartment with shared communal areas. These are the bathroom and kitchen which are shared with other French or foreign students. Please check on the availability in your destination city.



## HOTEL APARTMENT

These studios or two-room suites are all in the city centres, equipped with a kitchenette and a bathroom. Here, you will benefit from traditional hotel service, a reception that is open 24/7 and a cleaning service depending on the length of your stay.



## OTHER ACCOMMODATION OPTIONS

Our schools offer various other types of accommodation: hotels (from 2 to 4 stars) or youth hostels. Please contact us to find out more.

TOURNY

# LEARN FRENCH IN ICONIC CITIES

# OUR DESTINATIONS



# LSF-IEF SCHOOL, MONTPELLIER



Founded almost 30 years ago, LSF is a recognised and renowned French school. Located in the historic heart of Montpellier ideally situated close to shops, restaurants and tourist attractions.

## The school:

- 3 traditional and historic buildings in the heart of the city
- Computer room
- Catering area
- Relaxation area
- Resource Centre
- Private Garden
- Accessibility to those with reduced mobility

## The classrooms:

- Equipped with either televisions or digital whiteboards.
- Air conditioning in most classes
- Number of rooms: 20

## INFORMATION:

**Date of creation:** 1997

### Address:

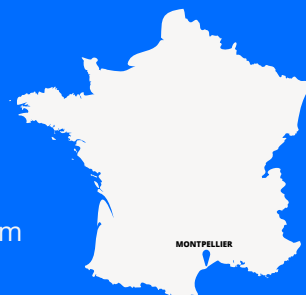
6, rue Foch  
34000 Montpellier

### Contact details:

+33(0)4 67 91 31 60  
contact@lsf-france.com

### Centre director:

Melissa BEL





# THE CITY OF MONTPELLIER

*"Bordering the Mediterranean"*

## ● FRANCE UNDER THE SUN

In Montpellier, sunshine is almost guaranteed all year round! With over 300 days of sunshine per year, you are sure to be able to enjoy walks and outings no matter the season. Explore by bike or on foot, parks, gardens and café terraces. Montpellier invites you to stroll and explore the city at your own pace.

## ● A DYNAMIC CITY

Montpellier is a city on a human scale with a warm atmosphere. Montpellier is a young city, renowned for its history and its numerous universities. With approximately 30% of its population made up of students, meeting people is easy. The local population is young, international and coming alive both day and night.

## ● AN IDEAL LOCATION

Positioned between the sea and the mountains, Montpellier has a rich historic centre that is bustling with various cultural sites or partying points. The region also offers beautiful trails to revitalise yourself in the surrounding nature.

### TRAVELLING TO LSF – MONTPELLIER

- ✈ **By plane:** Montpellier International Airport Mediterranean (serves the main capitals European + Paris)
- 🚆 **By train:** two stations in the city centre
- 🚲 **By public transport:** Trams/buses/ bicycles at the foot of our school buildings



WELCOME TO MONTPELLIER

# BLEU INTERNATIONAL SCHOOL, LYON



Lyon Bleu International was established in 1999 in the heart of the 6th district. Our school benefits from a privileged location near the historic centre and the Parc de la Tête d'Or. Our school is situated on the ground floor of a charming 19th-century building.

## The school:

- 600m2 floorplan in the heart of the city
- Computer room
- Catering area
- Relaxation area – fireplace
- Resource Centre
- Accessibility to those with reduced mobility

## The classrooms:

- Equipped with either televisions or digital whiteboards.
- Air conditioning in all classes
- Number of rooms: 16

## INFORMATION:

**Date of creation:** 1999

### Address:

82 Rue Duguesclin,  
69006 Lyon

### Contact details:

+33 (0)4 37 48 00 26  
info@lyon-bleu.fr

### Centre director:

Cécile Dupont-Bablon



# THE CITY OF LYON

## ● A DYNAMIC CITY

Lyon, the 3rd largest city in France, is an international crossroads both dynamic and modern. Lyon knows how to maintain its authenticity, culture, heritage and nightlife, guaranteeing that you will have a stay rich with experiences!

## ● A RICH HERITAGE AND A HISTORY

Start an adventure of discovery to the historic districts of the city: Old Lyon, the heart of the Presqu'île and the two hills (Fourvière and Croix-Rousse) which are listed as UNESCO Heritage sites. An exceptional legacy! From Gallo-Roman remains to canut workshops or go on a journey through time of 2000 years of history.

## ● THE CAPITAL OF GASTRONOMY

Lyon is the talismanic city of gastronomy. The cultural activities we offer will enable you to discover the riches of French cuisine. You can participate in local product tastings, wines and visits to the 'Halles Paul Bocuse'.

### TRAVELLING TO LYON BLEU INTERNATIONAL

- ✕ **By plane:** Lyon Saint International Airport Exupéry (30 minutes from the city centre)
- 🚆 **By train :** Lyon has five stations that connect to the major French and European cities
- 🚲 **By public transport:** Metro – bus – Bikes at the school entrance

*"Capital of French gastronomy"*



WELCOME TO LYON

# NEWDEAL INSTITUT, BORDEAUX



Newdeal Institut welcomes you to the heart of our renovated building, which was a former billiard table manufacturing factory.

Here are 16 bright and air-conditioned classrooms arranged around an inner courtyard, with common areas available for cooking and sharing enjoyable moments with professors and fellow students. Located in an upbeat and airy neighbourhood close to the university campus, the historic centre is only a 5-minute tram ride away.

## The school:

- 750m2 in the heart of the city
- Computer room
- Catering area
- Relaxation area – Open Space
- Application kitchen
- Resource Centre
- Accessible to those with reduced mobility

## The classrooms:

- Equipped with either televisions or digital whiteboards.
- Air conditioning in all classes
- Number of rooms: 16

## INFORMATION:

**Date of creation:** 2009

### Address:

74, avenue Thiers,  
33100 Bordeaux

### Contact details:

+33 (0)9 53 03 16 20  
[contact@newdealinstitut.com](mailto:contact@newdealinstitut.com)

### Centre director:

Léa Vandebussche



# THE CITY OF BORDEAUX

*"The world capital of wine"*

## ● AN EMBLEMATIC REGION

Here you can discover one of the most beautiful city centres in France. With its sculpted blond stone facades and its countless, often improbable café terraces. Just a bus ride away are ocean beaches and fishing villages that have become popular tourist destinations. For example, the dreamlike Cap Ferret or the Dune du Pilat.

## ● THE CAPITAL OF WINE

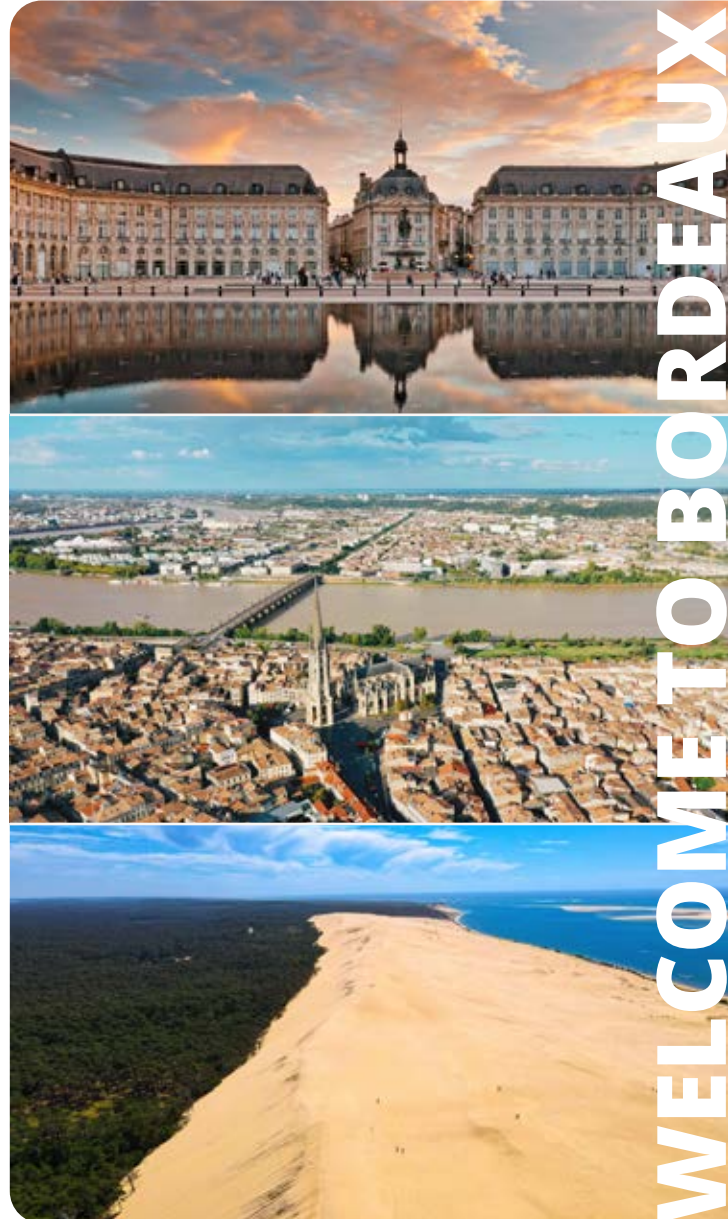
2000 years of wine culture has made the region of Bordeaux a world capital of wine. The Gironde region has more than 14,000 producers of white, rosé and especially red wines. Certain of the latter wines are world famous: Château Latour, Château Margaux, Pétrus, Château Mouton Rothschild... Exceptional wines that are served on the greatest of international tables.

## ● DESTINATION OF HEALTHY-LIVING

Bordeaux was crowned "Capital of Smart Tourism 2022" by the European Commission and awarded "Most Attractive City in the World" by Lonely Planet. Additionally, the New York Times placed Bordeaux as "N°2 of the essential cities to visit".

### TRAVELLING TO NEWDEAL INSTITUT BORDEAUX

- ✈ **By plane:** Bordeaux International Airport Mérignac (30 minutes from the city centre)
- 🚆 **By train:** Bordeaux Saint-Jean station (only 2h10 from Paris)
- 🚲 **By public transport:** Tram – bus – Bikes at the entrance to the school



# LANGUE ONZE SCHOOL, TOULOUSE

Established more than 30 years ago, Langue Onze is our French as a foreign language school in Toulouse. Located in the historic heart of Toulouse and just a few minutes walk from Place du Capitole, Langue Onze is ideally positioned to enjoy the pretty cobbled streets of the city centre. The school is easily accessible via public transport.

## The school:

- 500m2 floorplan in the heart of the city
- Computer room
- Relaxation areas
- Resource Centre
- Private interior courtyard
- Accessible to those with reduced mobility

## The classrooms:

- Equipped with either televisions or digital whiteboards.
- Air conditioning in most classes
- Number of rooms: 12

## INFORMATION:

**Date of creation:** 1991

### Address:

10, rue des Arts  
31000 Toulouse

### Contact details:

+33 (0)5 61 62 54 58  
info@langueonze.com

### Centre director:

Fanny Jorand



# THE CITY OF TOULOUSE

*"The Pink City"*

## • A RICH REGION

Positioned halfway between the Atlantic Ocean, the Pyrenees and the Mediterranean coast, Toulouse embodies characteristics from all three of these regional influences. This serves as an ideal starting point for organising excursions to the mountains, the sea or other picturesque places within the region.

## • A LIVELY CITY

Being the 4th largest city in France in terms of population, the Pink City is experiencing plenty of growth and attracts a large population of professionals and students. Undoubtedly, it is a vibrant and cosmopolitan metropolis, perfect for meeting people, forging friendships, and expanding

## • THE TOULOUSE INDUSTRY

From the Middle Ages to the present day, Toulouse has continued to grow and shine. Now renowned as the capital of aeronautics and space, many legendary aircraft and pilots have graced the Toulouse tarmac over the years. Jean Mermoz, Antoine de Saint-Exupéry, and Thomas Pesquet are just a few names of those that are etched into both the history of the



## TRAVELLING TO LANGUAGE ONZE TOULOUSE

- ✈ **By plane:** Blagnac International Airport (connects the largest capitals in Europe)
- 🚆 **By train:** Matabiau station in the city centre
- 🚲 **By public transport:** Metro – bus – Bikes at the entrance to the school

BIENVENIDO A TOULOUSE

# IFALPES SCHOOL, ANNECY



Our school of French as a foreign language in Annecy, IFALPES, is located in the city centre. This enables you to easily immerse yourself in the atmosphere of the 'Venice of Savoie,' besides the lakeside and amidst the French Alps. For more than 30 years, our French school in Annecy has been teaching students from all backgrounds who wish to learn French in a professional and friendly environment.

## The school:

- 200m2 in the heart of the city
- Relaxation areas
- Resource Centre
- Catering area
- Accessible to those with reduced mobility

## The classrooms:

- Equipped with either televisions or digital whiteboards
- Air conditioning in most classes
- Number of rooms: 6

## INFORMATION:

**Date of creation:** 1992

### Address:

14, avenue du Rhône  
74000 Annecy

### Contact details:

+33(0)4 50 45 38 37  
info@ifalpes.com

### Centre director:

Emmanuel Debroas





# THE TOWN OF ANNECY

*"The Venice of the Alps"*

## ● THE ALPINE TOWN

Nestled in the heart of the French Alps, Annecy is a tranquil and charming small town, with meandering canals flowing through its narrow streets. Located on the shores of one of Europe's purest lakes, Annecy invites you to daydream and find serenity.

## ● A NATURE DESTINATION

Tucked in between a lake and the mountains, Annecy is a destination of natural marvels. Voted twice as the best city in France for its quality of life, it boasts an exceptional natural environment. Its lake and beaches are all easily accessible by bike or bus and are perfect for refreshing yourself after your French classes. In summer, the water reaches an average temperature

## ● CULTURAL ACTIVITIES

Throughout the year, Annecy hosts many vibrant festivals and celebrations. From the Venetian Carnival in March to the International Animation Film Festival in June, or the Lake Festival in August, to the Spanish and Italian Film Festival in September, there are plenty of opportunities to immerse yourself in rich

### TRAVEL TO IFALPES ANNECY

- ✈ **By plane:** Geneva International Airport (45 minutes away from the school)
- 🚆 **By train:** Annecy station (opposite the school)
- 🚲 **By public transport:** Bus and bikes by the front of the school



WELCOME TO ANNECY

# CONTACTS

## THE KLF TEAM - KEEP LEARNING IS AT YOUR DISPOSAL TO PROVIDE YOU WITH ALL THE USEFUL INFORMATION YOU REQUIRE:

### KLF GROUP (KEEP LEARNING FRENCH)

**Commercial contact KLF**  
contact@klf.fr  
**Agencies:** agent@klf.fr



**Business development manager:**  
Lise Valadou  
lise@klf.fr

## CONTACT OUR SCHOOLS DIRECTLY:

### LSF-IEF MONTPELLIER:

**Commercial contact LSF-IEF:**  
contact@lsf-france.com  
**Agencies:** agent@lsf-france.com  
**Tel:** +33(0)4 67 91 31 60



### LYON BLEU INTERNACIONAL:

**Commercial contact Lyon Bleu:**  
info@lyon-bleu.fr  
**Agencies:** agent@lyon-bleu.fr  
**Tel:** +33 (0)4 37 48 00 26



### NEWDEAL INSTITUT BORDEAUX:

**Commercial contact Newdeal Institut:**  
contact@newdealinstitut.com  
**Agencies:** laurine@newdealinstitut.com  
**Tel:** +33(0)9 53 03 16 20



### LANGUE ONZE TOULOUSE:

**Commercial contact Langue Onze:**  
info@langueonze.com  
**Agencies:** agent@langueonze.com  
**Tel:** +33(0)5 61 62 54 58



### IFALPES ANNECY:

**Commercial contact Ifalpes Anancy:**  
info@ifalpes.com  
**Agencies:** agent@ifalpes.com  
**Tel:** +33(0)4 50 45 38 37

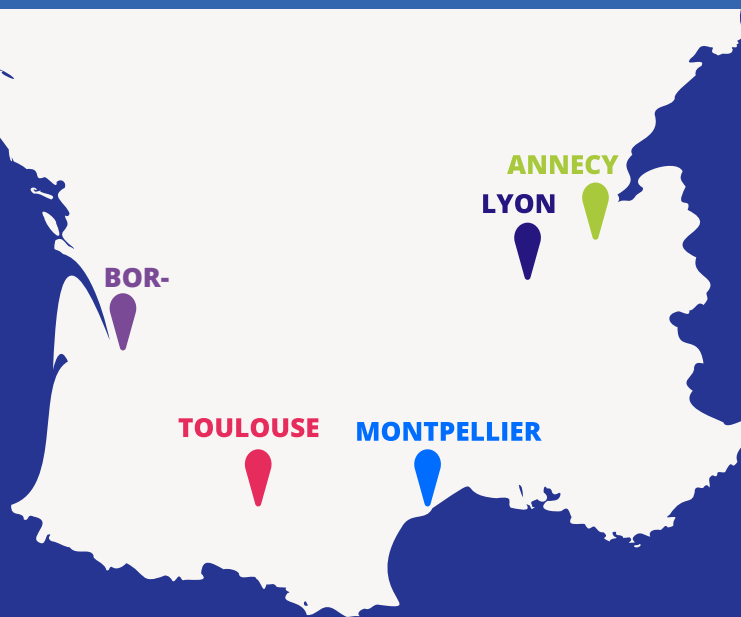




# Come learn French with us !

KLF - Keep Learning French

“WELCOME TO OUR SCHOOLS”



**Contacts:**  
[agent@klf.fr](mailto:agent@klf.fr) / [info@klf.fr](mailto:info@klf.fr)  
1, place Niki de Saint-Phalle  
34070 Montpellier – Francia



laoulouse  
**langue onze**  
école de langues

**AIFALPES**  
Institut Français des Alpes

**Newdeal**  
Institut de Français